

DBPLUS
better performance

Performance Monitor for Oracle Load Trends



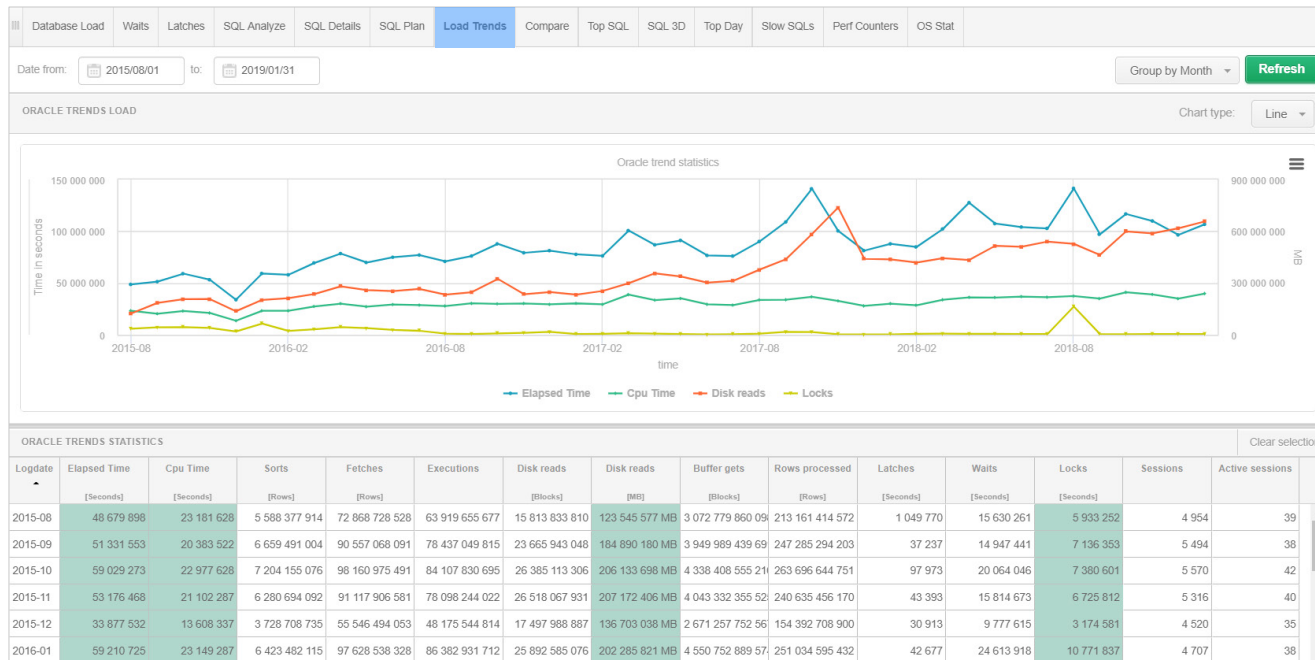
Load Trends

Load Trends is a module which you can use to easily examine the trends taking place in a given database.

The graph presents information for the last **3 years**.

Information is available for a selected period of time, grouped by one of the selected options:

- *Snap (15 minutes)*
- *Hour*
- *Day*
- *Month*
- *No grouping*



Load Trends Analysis

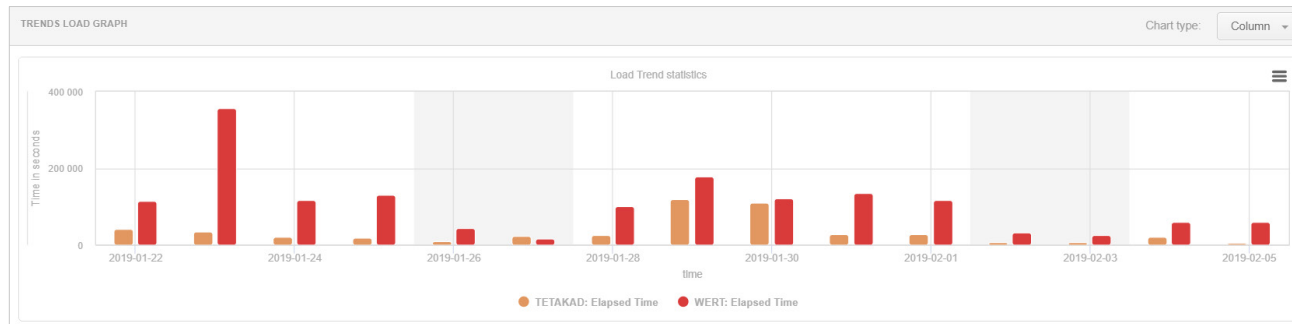
Load Trends Report is available in the main menu in the **Reports** section.

In order to execute the report, you should choose a database or databases from the list of available monitored databases.

Information is presented for a selected period of time, grouped by one of the selected options:

- *Snap (15 minutes)*
- *Hour*
- *Day*
- *Month*
- *No grouping*

The screenshot shows the 'Load Trends Analysis' interface. On the left is a sidebar menu with options: Dashboard, Database Analysis, Space monitor, Parameters, Reports (selected), Servers monitor, Configuration, and Help. Under 'Reports', 'Load trends' is selected. The main area has a 'SELECT SERVER' section with a search bar and a list of databases: ALL DATABASES, PRODUCTION DATABASE (expanded), ICARS, TETAKAD (checked), WERT (checked), and ORABI. To the right, there are filters for 'PERIOD' (Date from: 2019/01/22, Date to: 2019/02/05) and 'SPECIFIC FILTERS' (Group by Day, Group by Database). A 'Run report' button is at the bottom right.



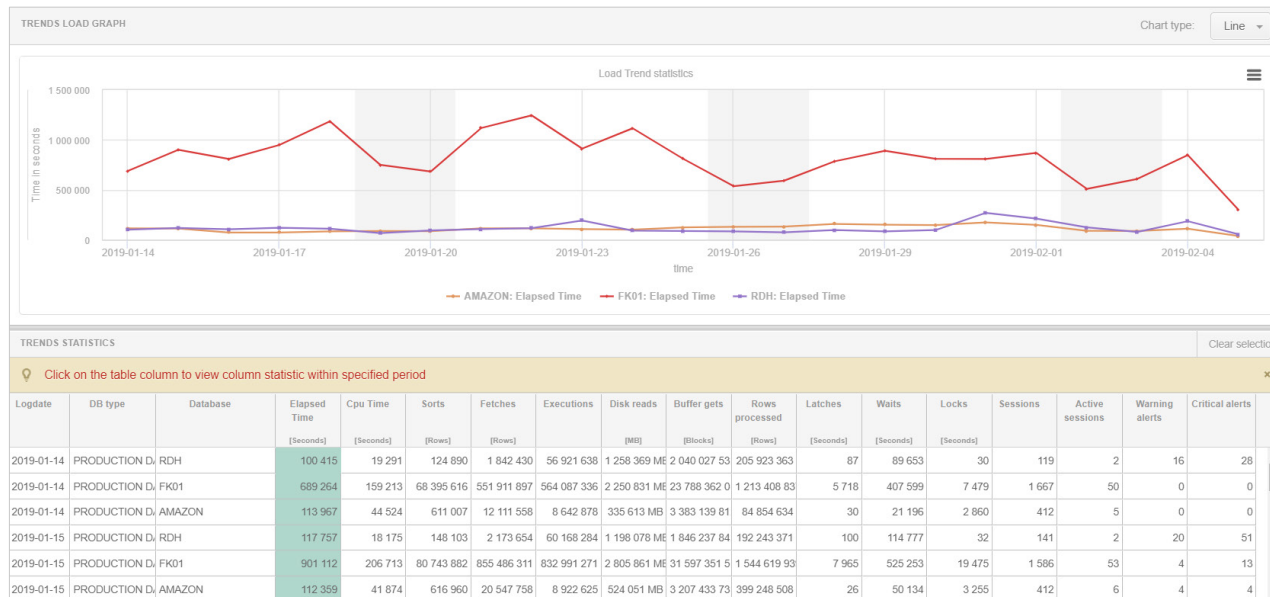
Load Trends Analysis

The report allows you to compare trends occurring in many databases.

The data in the chart is presented for the selected [statistics](#).

The report can be grouped in the context of:

- [Databases](#)
- [Databases types](#)
- [Total for all databases selected for the report](#)

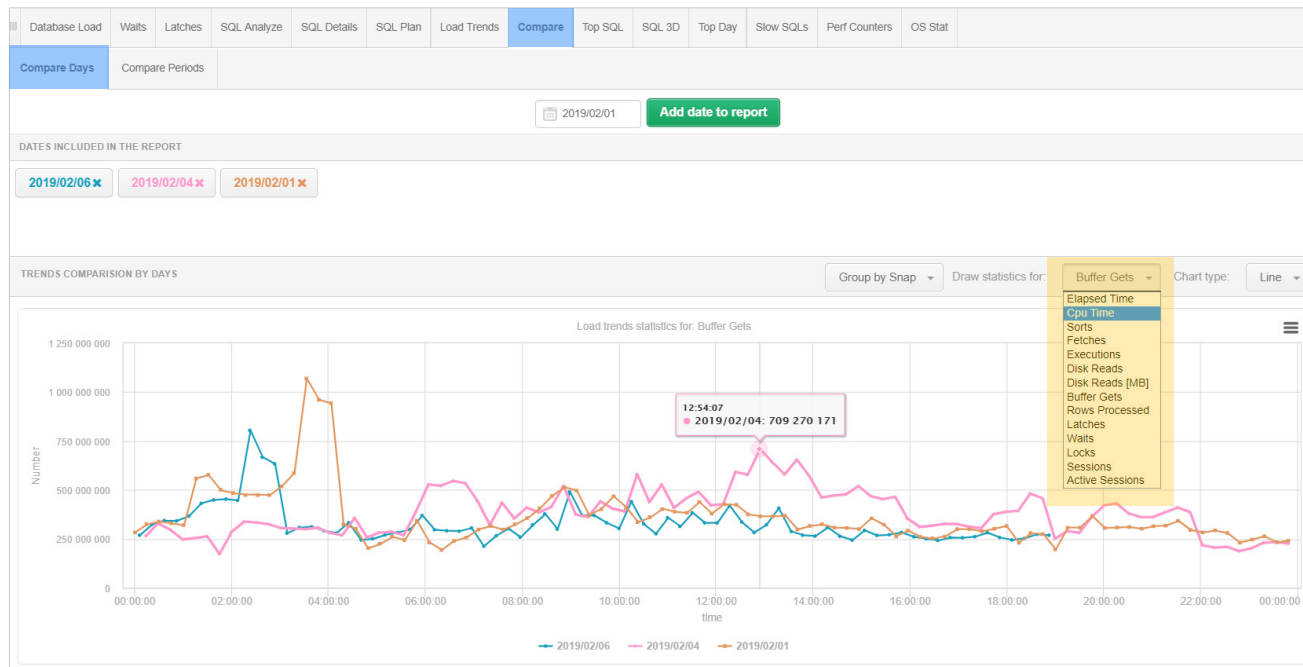


Compare Days

Compare is a module that allows you to compare a given **day** or **period** with another one indicated in the history.

The comparison can be made for all available performance meters.

The information is grouped in **hourly** and **15-minute** samples.

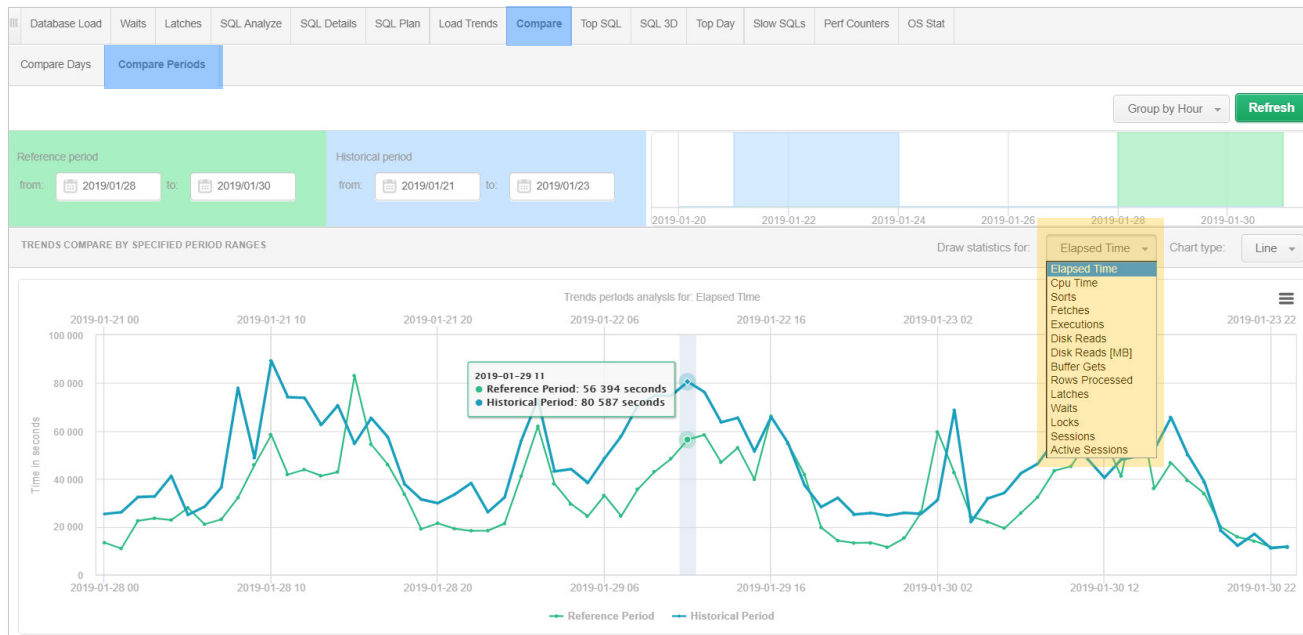


Compare Periods

The periods are compared by selecting the **reference** period and the **historical** period that we want to compare it with.

The comparison can be made for all available performance meters.

The information is grouped in **daily** and **hourly** samples.



DBPLUS
better performance

Thank you

www.dbplus.tech

dbplus.tech